



---

# LEEDS CASTLE WEDDINGS

---

AT THE LOVELIEST CASTLE  
IN THE WORLD









# CREATE YOUR OWN HISTORY

Rising majestically from the still waters of its moat, surrounded by 500 acres of parkland and gardens, Leeds Castle in Kent is an idyllic setting for the most romantic of weddings whatever the season.

During its 900 year history, Leeds Castle has been a Norman stronghold, the private property of six of England's medieval Queens and a palace used by Henry VIII and his first wife Catherine of Aragon. More recently, the Castle was an elegant early 20th century playground for the rich and famous, as Lady Baillie, the last private owner, entertained high society down from London for the weekends.

Our choice of historic venues and wedding packages will be tailored to meet your requirements by our experienced Wedding Co-ordinators. From your initial enquiry to the day itself, our team will provide a superb level of service to ensure you have the perfect wedding at “the loveliest castle in the world”.







## YOUR IDEAL VENUE

LEEDS CASTLE OFFERS YOU AN INCREDIBLE SELECTION OF AWARD-WINNING  
AND HISTORIC WEDDING VENUES FOR YOUR SPECIAL DAY.

LET US HELP YOU TAILOR YOUR DAY TO BE EXACTLY AS YOU IMAGINE, FROM A  
GRAND EXCLUSIVE CASTLE WEDDING TO A MORE INTIMATE VENUE, WE WILL  
ENSURE YOU HAVE THE CEREMONY AND RECEPTION OF YOUR DREAMS.



CASTLE  
WEDDINGS



MAIDEN'S TOWER  
WEDDINGS



BATTEL HALL  
WEDDINGS



FAIRFAX HALL AND  
MARQUEE RECEPTIONS





## 900 YEARS OF HISTORY

Leeds Castle was built in 1119 by Robert de Crevecoeur, descendant of one of William the Conqueror's lords and replacing the earlier Saxon manor of Esledes.

It passed in to royal hands in 1278 when it became part of the Queen of England's dower - the settlement widowed queen received upon the death of her husband. Major improvements were made at this time, including the construction of the Barbican, drawbridge, gateway and portculis. Most famously once owned by Henry VIII, Leeds Castle over the course of the previous 150 years was also owned by a succession of six medieval queens: Eleanor of Castile, Margaret of France, Isabella of France, Joan of Navarre, Anne of Bohemia and Catherine de Valois.

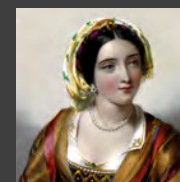
The last royal owner was King Edward VI, and in 1552 he gave the Castle to his loyal subject, Sir Anthony St Leger.

It then passed through several families and unlike many aristocratic homes, was left relatively undamaged during the Civil War. It swapped from Royalist to Parliamentary hands and back again, most notably that of Thomas, 2nd Lord Culpeper, whose father had been rewarded for his loyalty to the crown with the grant of more than five million acres of land in Virginia.

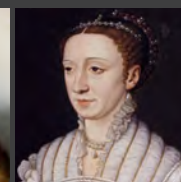
The last private owner of the Castle, Olive, Lady Baillie, left an indelible mark on the place. She bought the Castle in 1926 and embarked on a complete refurbishment, using the finest French architects and designers to create an elegant country residence. Upon her death in 1974, Lady Baillie left the Castle to the Leeds Castle Foundation, a private charitable trust whose aim is to preserve the Castle and grounds for the benefit of the public. The Castle was opened to the public in 1976.



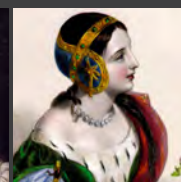
**KING HENRY VIII**  
(1509-1547)  
MANNER OF  
JOHAN VAN DER BANCK (c.1700)



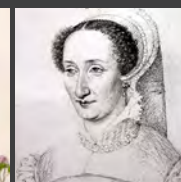
ELEANOR OF  
CASTILE



MARGARET OF  
FRANCE



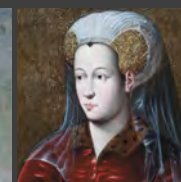
ISABELLA OF  
FRANCE



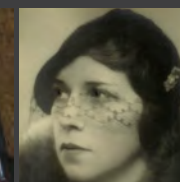
JOAN OF  
NAVARRÉ



ANNE OF  
BOHEMIA



CATHERINE  
DE VALOIS



OLIVE  
LADY BAILLIE





# CASTLE WEDDINGS

If you are looking for a beautiful and historic venue for your wedding day, look no further than the Castle wedding. The magnificent state rooms provide the perfect setting for each stage of your perfect day. Ceremonies take place in the newly refurbished Ceremony Room adjoining the Library, which is ideal for Champagne drinks receptions. The daylight streaming through the beautiful long French window and soft colours of the room bring a sense of calm to your ceremony.

Your wedding breakfast will be served in the largest room of the Castle, the Henry VIII Banqueting Hall. The room boasts impressive views across the moat, a grand 16th Century French Caen stone fireplace and a magnificent ebony floor.

Retire after dinner with your guests to the opulent 1920s Castle Drawing Rooms and continue your celebrations with dancing in the Heraldry Room before staying overnight in one of the luxurious period Castle bedrooms.

- CEREMONY VENUE: CASTLE CEREMONY ROOM
- EVENING RECEPTION VENUE: CASTLE OR FAIRFAX HALL
- CEREMONY CAPACITY: 100
- WEDDING BREAKFAST CAPACITY: 100
- EVENING RECEPTION CAPACITY: 120 CASTLE, 200 FAIRFAX HALL







# MAIDEN'S TOWER WEDDINGS

The Maiden's Tower is an elegant, exclusive hire venue adjacent to the Castle. The 16th century stone building, used for weekend house parties in the 1920s, is now a glamorous self-contained venue perfect for your wedding ceremony, evening celebrations and overnight accommodation.

Standing separate from the Castle, this fine late-Tudor structure replaced an earlier medieval building known as the Square Tower until the 19th century. The tower was reconstructed as part of Henry VIII's rebuilding work, to accommodate the Queen's ladies in waiting.

The venue consists of two function rooms with French doors leading onto a charming private garden and five en-suite five star bedrooms, all beautifully decorated in period style with a contemporary twist, offering views across the moat to the golf course and surrounding parkland.

CEREMONY VENUE: THE LONG GALLERY

EVENING RECEPTION VENUE: MAIDEN'S TOWER OR FAIRFAX HALL

CEREMONY CAPACITY: 80

WEDDING BREAKFAST CAPACITY: 80

EVENING RECEPTION CAPACITY: 100 MAIDEN'S TOWER, 200 FAIRFAX HALL







# BATTEL HALL

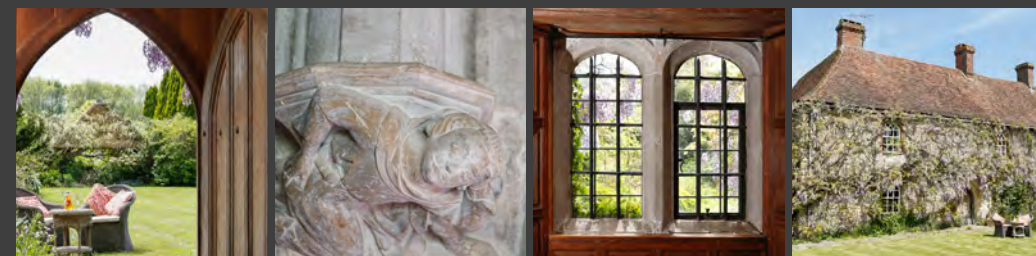
Built in the early 14th century as a medieval manor, Battel Hall is a fine and rare example of local Kentish architecture of the period. This large and comfortable home, full of character and distinctive historical features is available from 2017 for exclusive weddings and private dining hire.

Say 'I do' in the beautiful Ceremony Room, featuring rich wood panelling - and move on into the drawing room or library, both wonderfully traditional rooms for entertaining guests. The downstairs layout also lends itself as an ideal setting for intimate dinners and cocktail parties. Upstairs five luxurious en-suite guest bedrooms offer stunning views of the gardens, the far North Downs and glimpses of Leeds Castle. The adjacent grade two listed Battel Oast offers a further six en-suite rooms including an accessible ground floor bedroom.

Battel Hall is a venue for all season events, with cosy sofas and open fires to warm the winter nights. In the spring and summer months, a beautiful 100 year old wisteria smothers the exterior walls with perfumed blooms. Doors from the library lead into charming extensive gardens and woodland area, ideal for open-air events, high tea and croquet. For a charming outdoor summer wedding, hold your ceremony in the timber-framed garden pagoda.

WEDDING BREAKFAST CAPACITY: 25 \* STANDING BUFFET RECEPTION CAPACITY: 50

DRINKS RECEPTION CAPACITY: 70 \* SUMMER GARDEN MARQUEE RECEPTION CAPACITY: 100







## FAIRFAX HALL AND MARQUEE RECEPTIONS

The Fairfax Hall is an immaculately restored Kentish timber-framed barn that dates from 1680. This 17th century venue is ideal for larger evening receptions and offers some of the most spectacular views of the Castle looking across the moat. On a fine evening, guests can mingle outside on the large terrace with drinks and canapés.

For larger guest numbers, a marquee on the Cedar Lawn offers additional space and added flexibility for your celebration with stunning views. Our Hospitality team will help you to create a bespoke wedding reception, tailored to your personal requirements. The incredible view of Leeds Castle at night from across the moat will make your evening even more memorable.

EVENING RECEPTION VENUE: THE FAIRFAX HALL

EVENING RECEPTION CAPACITY: UP TO 200 (AVAILABLE FROM 7PM)

BESPOKE MARQUEE: UP TO 500



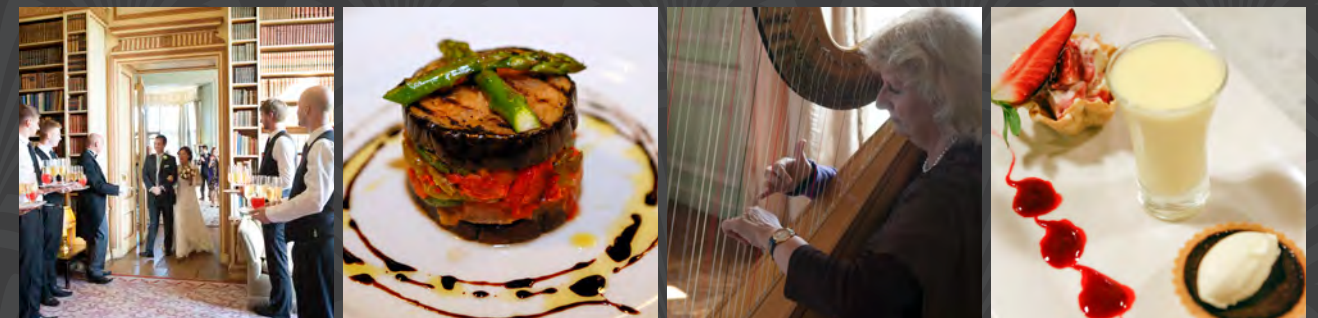




## AT YOUR SERVICE

When you hold your wedding at Leeds Castle, you can be assured to receive the very best in service from our team, from the moment of your initial enquiry to the attention to every detail on the day itself. Our catering team boasts an exceptional reputation for the quality of their cuisine and excellence of service. They will provide exquisite catering to suit your tastes and the unique style of your wedding.

We will assist you in any way we can, from recommending musicians, photographers or other suppliers. The delightful grounds of the estate will provide a stunning backdrop for your photographs, ensuring you will always remember your special day at “the loveliest castle in the world”.







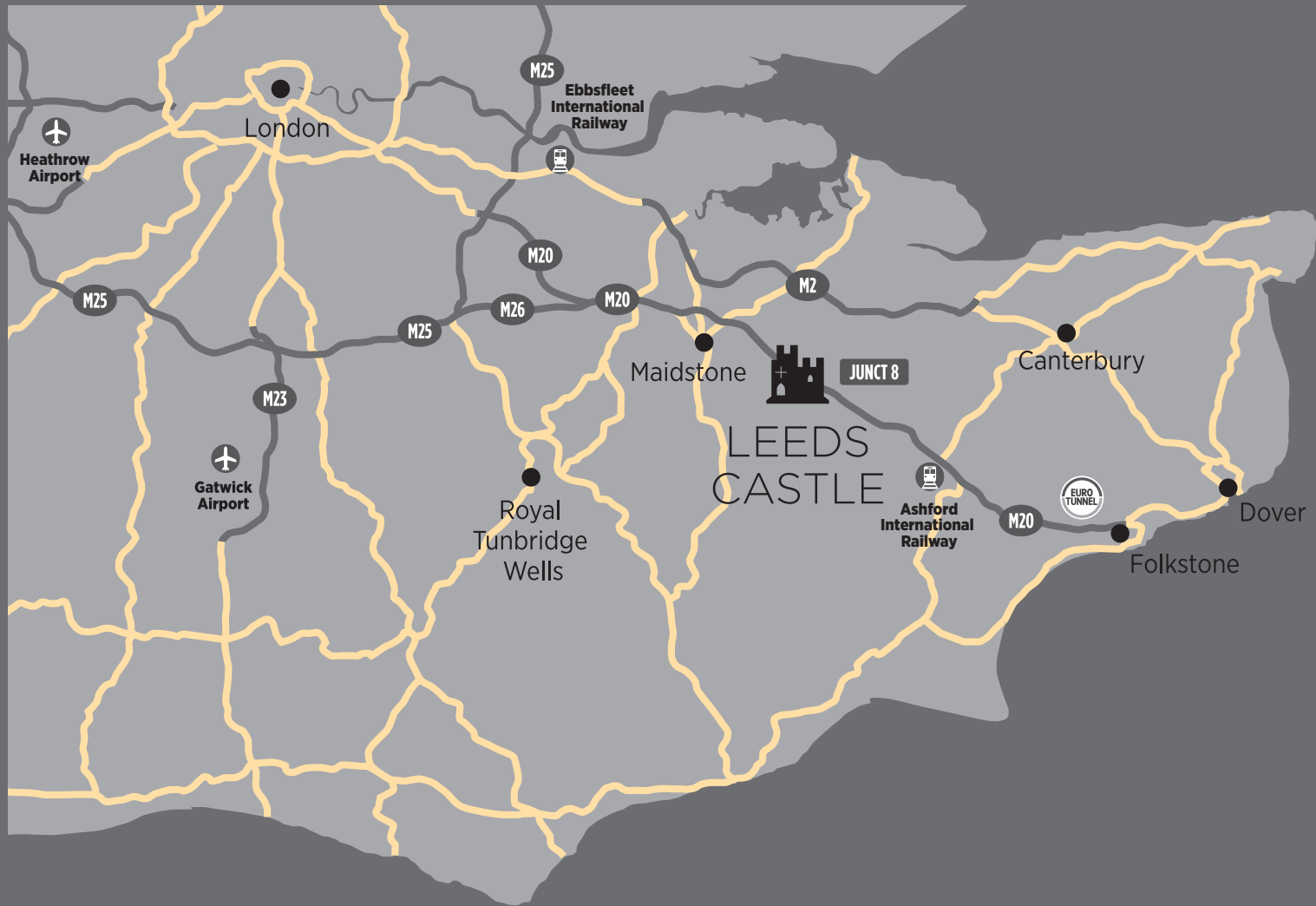
# ACCOMMODATION

Your special day at Leeds Castle does not need to end with the last dance of the evening. For Castle weddings, choose to stay in one of the twenty bedrooms in the Castle, including eight luxurious State bedrooms, each uniquely furnished with period antiques and large original en-suite, art deco marble bathrooms. Many of the rooms offer traditional four poster beds and breath-taking views across the moat and surrounding parkland. The twelve Battlement bedrooms are all named and styled around the members of the Castle's housekeeping staff during the 1930s.

In addition to the Castle bedrooms, guests can choose to stay in one of the five star Maiden's Tower Bedrooms; four star Stable Courtyard Bed and Breakfast rooms just a short stroll from the Castle Island; one of our luxury self-catering holiday properties located within the Leeds Castle Estate; or during the summer months, the medieval styled Knight's Glamping accommodation.







IF YOU ARE INTERESTED IN SEEING THE BEAUTIFUL VENUES AVAILABLE AT LEEDS CASTLE, PRE-BOOK A  
PERSONAL SHOW ROUND, OR VISIT ON ONE OF OUR NEXT WEDDING SHOWCASE DAYS.

PLEASE VISIT: [WWW.LEEDS-CASTLE.COM/WEDDINGS](http://WWW.LEEDS-CASTLE.COM/WEDDINGS) CALL: 01622 767877

EMAIL: [WEDDINGS@LEEDS-CASTLE.CO.UK](mailto:WEDDINGS@LEEDS-CASTLE.CO.UK) LEEDS CASTLE, MAIDSTONE, KENT ME17 1PL.

WITH SPECIAL THANKS TO PHOTOGRAPHERS DAVID FENWICK, YVETTE CRAIG, LOUISA DETTMER AND HELEN CAWTE

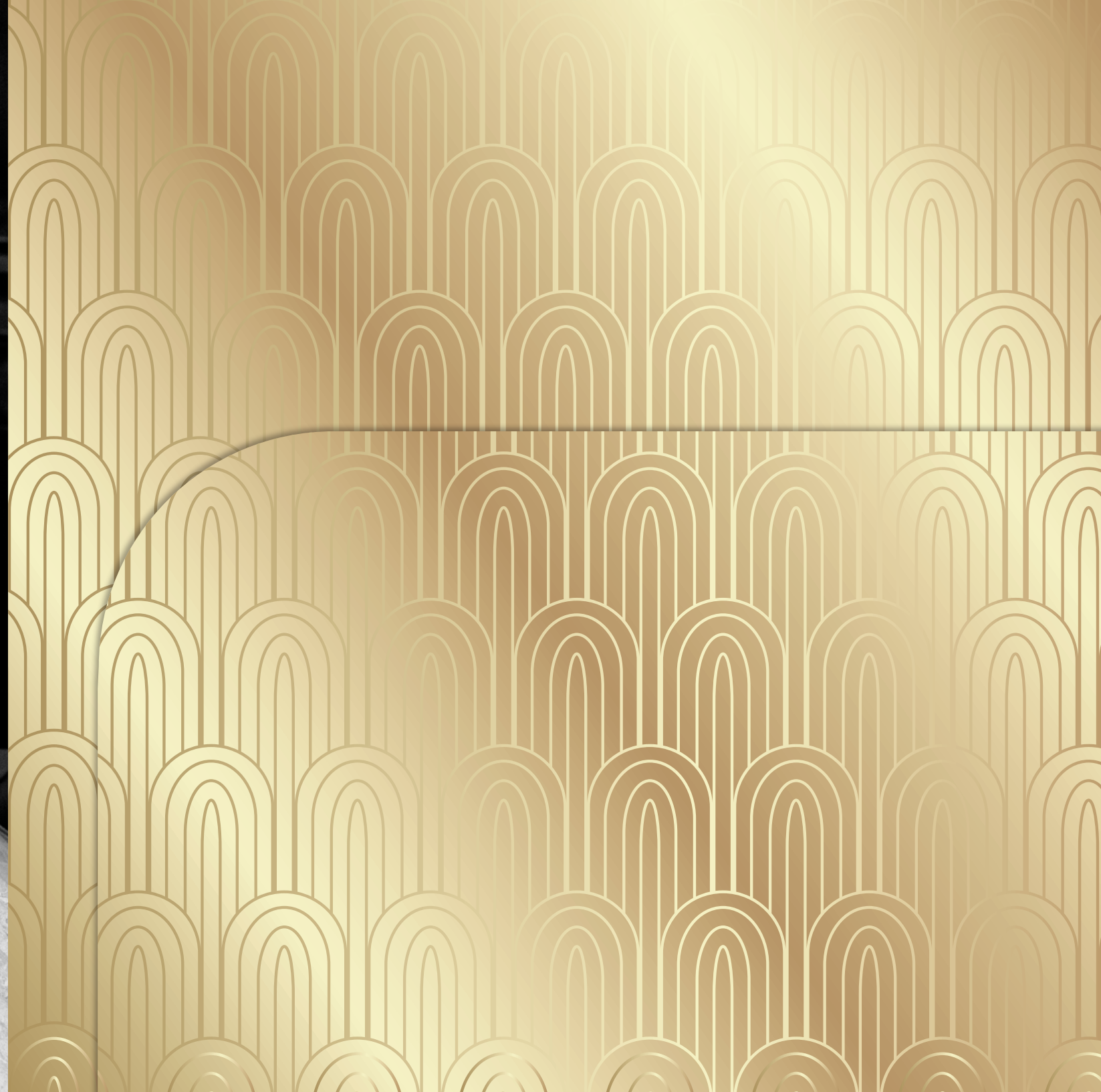
DESIGNED BY INDELIBLE CREATIVE







TO HAVE AND TO HOLD







LEEDS CASTLE

[LEEDS-CASTLE.COM](http://LEEDS-CASTLE.COM)